

#make the blu experience

LISBON

city guide

blu.
SELECTION

WELCOME TO LISBON

Dear reader,

As an international recruitment team, we live with the spirit of the expatriate which makes us this passionate about travelling, learning new cultures, gaining new skills and habits, speaking a new language, making priceless memories and inspiring others to make the international experience.

If you have tons of questions or hesitations about moving abroad we understand: we all did when we took up this challenge. That's why we know how relocating feels, and we are ready to share your excitement and give you keys to overcoming your questions.

In this city guide, we have gathered the essential information on living and working in Lisbon. We hope you enjoy the city as much as we do!

1 - Lisbon Facts

2 - Cost of Living

3 - Transportation

4 - Accommodation

5 - Bureaucratic Tips

6 - Life in Lisbon

7 - Culture in Lisbon

#makethebluexperience

LISBON FACTS

2.9 Million
POPULATION

50 different
NATIONALITIES

+30% of the people
living in the city have
FOREIGNER origins.

MAIN NATIONALITIES

Portuguese **Brazilian**
Spanish British **Dutch**
French **German**

LANGUAGES
Portuguese
English

+13 MILLION
VISITORS
EACH YEAR

the oldest city in
Western Europe

city on
7 hills

Average Temperature
12°C in winter
25°C in summer

LISBON FACTS

DID YOU?
KNOW THAT •



Ravens are one of the symbols of the city?

The Vasco da Gama Bridge over the Tagus River is the longest bridge in Europe – 17, 2 km (10.7 miles) long?

Lisbon is home to the beautiful Torre de Belem which is a UNESCO World Heritage Site?

There's a museum located underneath Baixa called Nucleo Arqueologico?

The oldest (Livraria Bertrand, 1732) and the smallest bookstores (Livraria do Simão, <35 sq ft) in the world are in Lisbon?

LISBON FACTS

TIME TABLES

Opening Hours for Stores:

Shops in the centre of Lisbon are open from Monday to Friday, until 7 or 8 pm. Some smaller shops also break for lunch from 1 to 3 pm, but the larger shops and chains won't take this break and will also normally open on Saturday mornings. From 7 pm onwards, the large shopping centres and souvenir shops will still be open.

HOLIDAYS

- **New Year's:** 1 January.
- **Freedom Day (Dia de la Liberdade):** 25 April.
- **Labour Day (Dia do Trabalhador):** 1 May.
- **Portugal Day:** 10 June.
- **St. Anthony's Day (Dia de Santo António):** 13 June.
- **Assumption Day:** 15 August.
- **Republic Day (Implantação da República):** 5 October.
- **Il Saint's Day (Todos os Santos):** 1 November.
- **Restoration of Independence Day (Restauração da Independência):** 1 December.
- **Immaculate Conception (Imaculada Conceição):** 8 December.
- **Christmas:** 25 December.

COST OF LIVING

DINING OUT

Basic Breakfast Out : 3 - 5€

Basic Dining Out for 2 : 15 - 30€

Expensive Dining Out for 2 : 30 - 70€

Combo Meal in a Fast Food Chain : 6 - 8€

Water (33cl bottle) in bar/pub: 1 - 1.5€

Coke (33cl bottle) in bar/pub: 1 - 2€

Coffee (espresso or with milk) : 0.8 - 3€

Domestic Beer (50cl) : 1 - 3.5€

Imported Beer (33cl) : 2 - 4€

Wine Bottle in a Restaurant : 8 - 20€

Cocktail : 4 - 7€



SUPERMARKET

Bread/Baguette : 1€

Milk (regular) : 0.75€

Water (1.5l bottle) : 0.25 - 1.2€

Pack of Cigarettes : 5-7€

12-Pack (33cl) Domestic Beer : 5 - 9€

Round Steak (500gr) : 3 - 8€

Chicken Fillets (500gr) : 2 - 4€



COST OF LIVING

ACCOMMODATION

1 Bedroom Flat Rent in Center : 750 - 1500€

3 Bedrooms Flat Rent in Center : 1500-3000€

1 Room Rent in a Shared Flat : 350 - 650€

Basic Utilities for 3 Bedrooms Flat : 80 - 200€

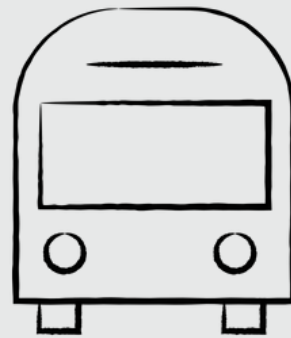


TRANSPORTATION

One-Way Ticket : 1.5€

Monthly Pass : 40€

Taxi Trip (5-10km) : 6 - 9€



ENTERTAINMENT

Cinema Ticket for 1 : 6 - 8€

Gym Monthly Fee: 25 - 50€

Club Entry (some free before 2 am) : 10 - 20€



METRO, BUS, FERRY & TRAM

Carris/Metro Ticket

1,50€

1 Day ticket (24h)

6.40€

Carris/Metro

Carris/Metro/Transtejo (Cacilhas)

9,55€

Valid for unlimited journeys on Carris, Metro and Transtejo (Cacilhas river connection), during 24 hours following the first validation.

Carris/Metro/CP

10.60€

Valid for unlimited journeys on Carris, Metro and CP (Sintra, Cascais, Azambuja and Sado lines), during 24 hours following the first validation.

Prepaid travel credit that can be used on various operators.

The cost of each journey is deducted from your card balance, according to the fares and conditions of each operator.

Each zapping journey refers to one operator only. Every time you change transport operators, an additional fare is deducted from your card, according to the conditions of the operator.

The following amounts can be topped up: 3€, 5€, 10€, 15€, 20€, 25€, 30€, 35€ e 40€.

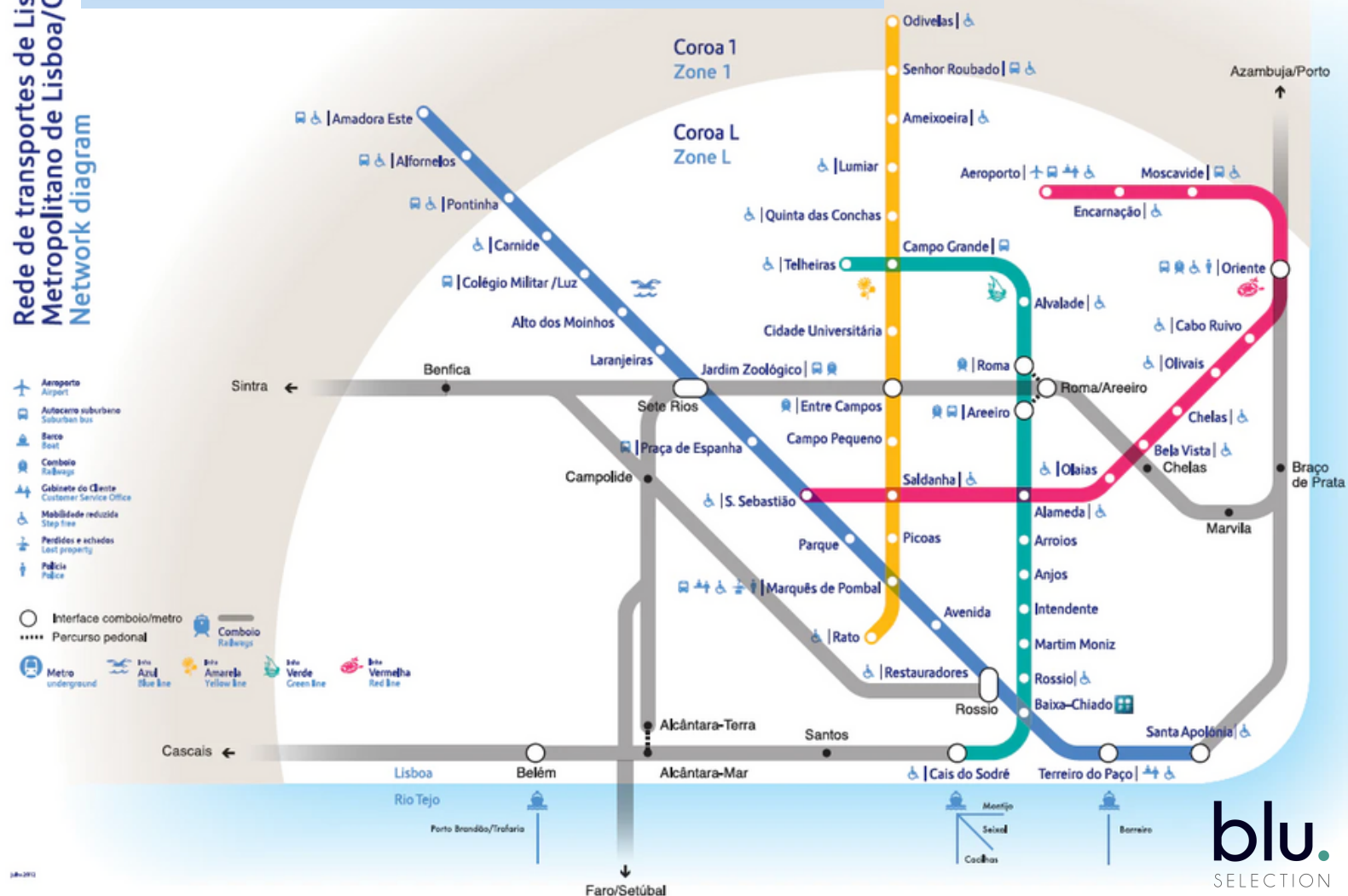
Metro journey

1,34€

Valid for a single journey on the Metro network



Rede de transportes de Lisboa
Metropolitano de Lisboa/CP/TT
Network diagram



TRANSPORTATION

RIDING

Despite the seven hills, the people of Lisbon cycle! You can also use **public bicycle sharing systems** to explore the city.



Gira



Lime



Hive

Electronic scooter systems are also a hip way to get around in Lisbon.

TRANSPORTATION

FROM/TO AIRPORT



welcome!

Taxi

Airport Taxi is a convenient way for multiple visitors to arrive at their destination. A 20 minutes ride that will take you to the city centre will cost 20-25€.

Metro

With the "Aeroporto - Saldanha" line you can go to downtown Lisbon in about 20 minutes. The only thing you need is a single ticket which is 1.50€.

Bus

You can take several bus lines from the arrivals terminal to the different parts of the city. The fare is about 1.50-2€.

Shuttle

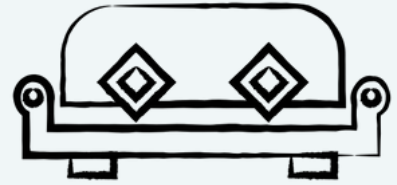
If you feel more comfortable, you can also choose the shuttle options from both terminals.



ACCOMODATION

HOUSING

There are two basic ways to find a flat or room here in Lisbon:



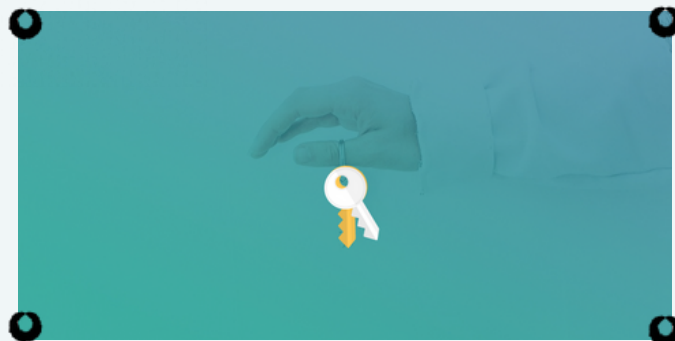
The first one is through **Facebook groups**. You can either directly look for room share and flat rent groups or the general community groups of the city.

The second option to find flats or rooms to rent is through web pages such as the ones given below.

You will be able to filter your search according to your needs or possibilities, for example, filter by your budget or the area you want to live in.



idealista



CASASAPO

Portal Nacional de Imobiliário desde 2001

badi

ACCOMODATION

NEIGHBOURHOODS

Most renowned

Baixa

Best nightlife

Bairro Alto

Most fashionable

Príncipe Real

Oldest but charming

Alfama

Modernest

Parque das Nações

Most diverse

Mouraria

Most touristy

Belém

Most residential

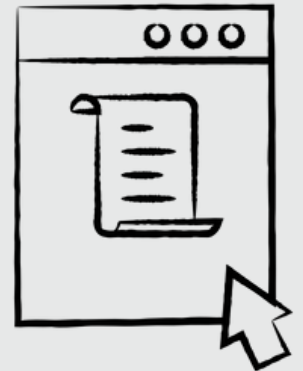
Campo de Ourique



BUREAUCRATIC TIPS

NIF GUIDE

You'll need a tax number or Numero de Indentificacao Fiscal (NIF) if you want to involve in any official or legal activities such as paying taxes or buying a property in Portugal. You can apply for a Portuguese NIF number through the tax authorities.



The NIF number is a nine-digit number that is unique to each resident whether they're resident or non-residents. You may see this number displayed on tax cards and the citizen's ID card.

You can apply for a Portuguese NIF number in following places:

- Local tax office of the Portuguese tax authority
- at a local branch of a Citizen Shop
- at a counter that provides the Citizen Card

You can also get a temporary NIF number via a Portuguese lawyer or a fiscal representative who agrees to act on your behalf if you're a non-resident and want to apply from outside of Portugal,

For Non-EU: Please check [SEF](#).

BUREAUCRATIC TIPS

The document requirements for a Portuguese NIF number:

- A valid piece of photo ID (or a scanned, signed copy if applying through a lawyer or representative). For nationals from outside the European Union (EU), European Economic Area (EEA) or Switzerland, this must be a passport. For EU/EEA/Swiss citizens, a national ID card from your country is sufficient. In some circumstances, those unable to present a passport or official photo ID can use their birth certificate instead.
- The proof of your address (e.g., utility bill). If you're applying from abroad through a representative, you'll need to provide a Power of Attorney document (translated into Portuguese) which grants them permission to act on your behalf.

There is no fee for getting a NIF number in Portugal. The fee for the Portuguese tax card is €6.80.

For Health Insurance you can find information [here](#).

LIFE IN LISBON

WHAT TO DO?

Go on a street tile hunt

Watch the sunrise at
Alfama

Visit the Palacio de la
Frontera

Visit the Pombal Palace at
the Carpe Diem Gallery

Take tram number 28 in
the sunset

Walk on beautiful
Portuguese pavements.

Get lost in the street and
alleys around the castle

Take the Ascensor de Santa
Justa from Baixa to 45
meters higher Chiado

Eat at Pastéis de Belém!



LIFE IN LISBON

MARKETS

Feira da Ladra

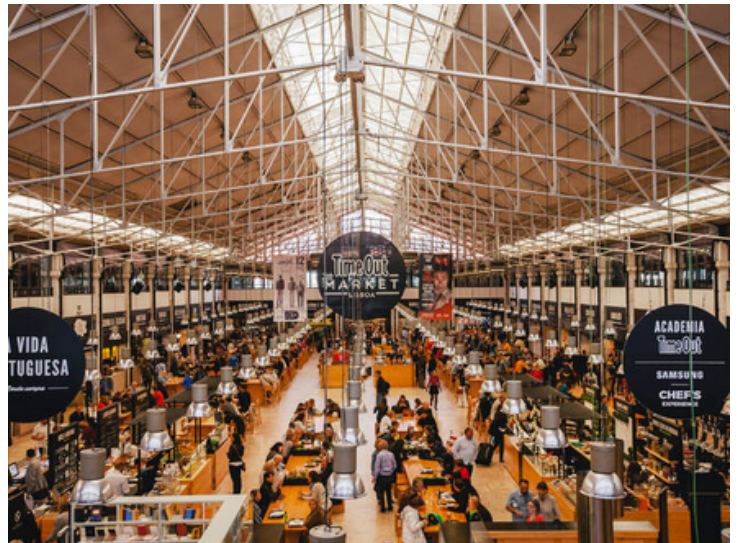
In the oldest flea market in Lisbon, you can find all the antiques you want!

Mercado de Arroios

In the heart of Mouraria, this hydroponic food market might be your regular destination.

Mercado da Ribeira (Time Out Market)

The restaurants of the best local cuisine chefs selected by Time Out editors will be "the" attraction for many foodies.



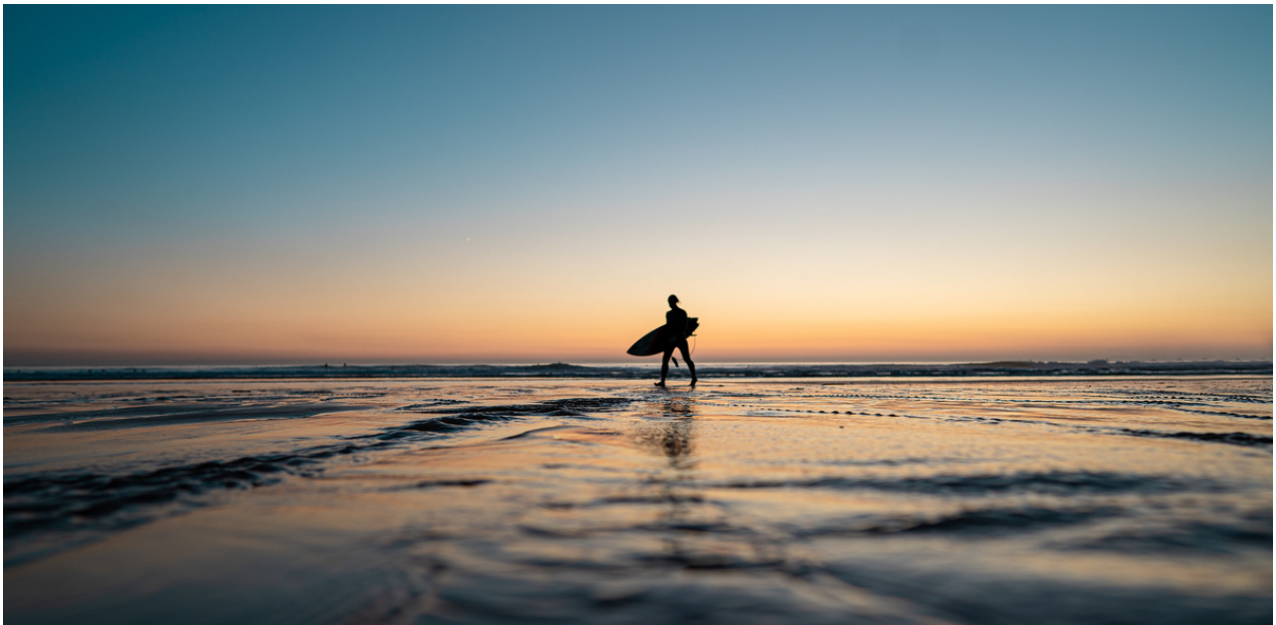
Mercado do Jardim

The garden of Estrela hosts artisans and designers on the first week of each month!

LIFE IN LISBON

BEACHES

There are two sandy coastlines easily accessible from Lisbon; the Cascais-Estoril coastline (to the west of Lisbon) and Costa de Caparica (to the south of Lisbon). Slightly further (and needing a rental car to visit) are the wild beaches of the Serra de Sintra coastline and the paradise beaches of the Serra da Arrabida.



- **Praia de Carcavelos** (train 30 minutes from central)
- **Praia da Conceição, Cascais** (train - 45min)
- **Costa da Caparica** (bus - 30 minutes)
- **Praia Sao Pedro** (train 40 minutes)
- **Praia do Tamariz, Estoril** (train 40 min)
- **Praia de Santo Amaro de Oeiras** (train 20 min)

CULTURE IN LISBON

CELEBRATIONS

Carnival

Brazilian carnival costumes and samba, what else can one want to celebrate the carnival of the year?



São Antonio

This June festival will bring some colour, fado and good food to your life. Appreciate the street ornaments, the concerts and the other activities, try grilled sardines and don't miss the parade on the Eve of Santo Antonio, the 12th of June!.

Festival dos Oceanos

This 2-week long cultural event is a celebration of oceans! Live concerts, street performances, cultural activities and more... All takes place in Centro Histórico, Belém and Parque das Nações in late July and the beginning of August.



Festa do Avante

Since 1976, every year locals gather for this political, cultural and sports festival. Organized by the Portuguese Communist Party, Festa do Avante offers you a truely local experience in September.

CULTURE IN LISBON

TRADITIONS

Bacalao & Sardines

Caldo Verde & Açorda

Francesinha

Pastel de Nata



GASTRONOMY

MUSIC



Fado

Regional Folk Music

Tiles

Arraiolos Carpets

Filigree



ARTS

#MAKETHEBLUEXPERIENCE

The Blu Experience? What is "Blu"? And why would you want to experience it?

When we speak about the "Blu Experience" we are talking about the experience you have with the members of our Blu Team during the whole selection process.

As we are working in a human-to-human business it is very important for us to have a good connection with our candidates. Therefore, we decided to make us, the Blu Team, more transparent to you. We want to share our passion and motivation that you see behind Blu Selection there is more than just a voice on the phone.

We are here to help you with more support as you deserve, career know-how we have and the spirit of the expatriate we share together.

Welcome to the Blu Experience!

Feedback matters, let's keep it mutual!

What you think about us matters.

Please let us and others know about your #bluexperience.



leave a **review** . 



LET'S START A NEW JOURNEY TOGETHER!

contact@bluselection.com

+34 931 24 44 90



#make the blue xperience